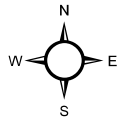


Town of Hopkinton MASSACHUSETTS

ZONING MAP

Voted at Annual Town Meeting
May 2, 2011



Legend

- Water Bodies
- Parcel Boundaries
- Town Boundary
- Hotel Overlay
- OSMUD Overlay District**
 - South Parcel (35 Acres)
 - Osmud Height District
 - North Parcel (68 Acres)
 - Commercial Subdistrict
 - Residential Subdistrict
 - Village Center Subdistrict

Zoning

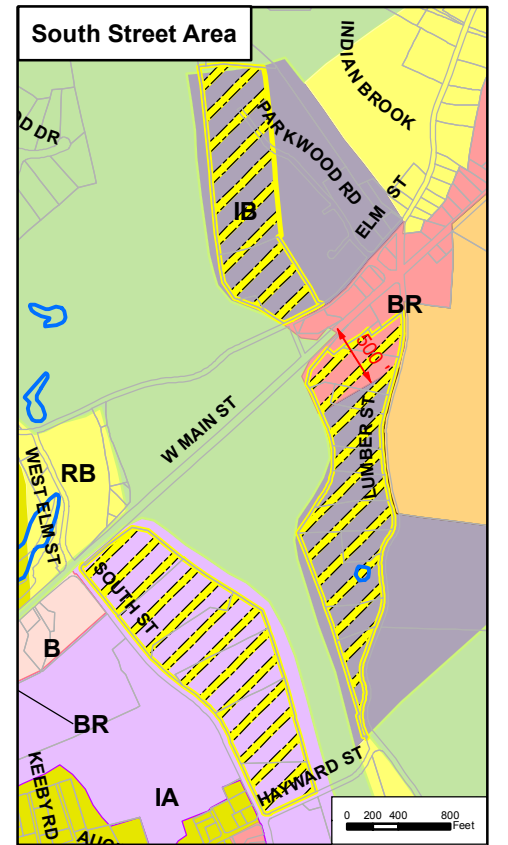
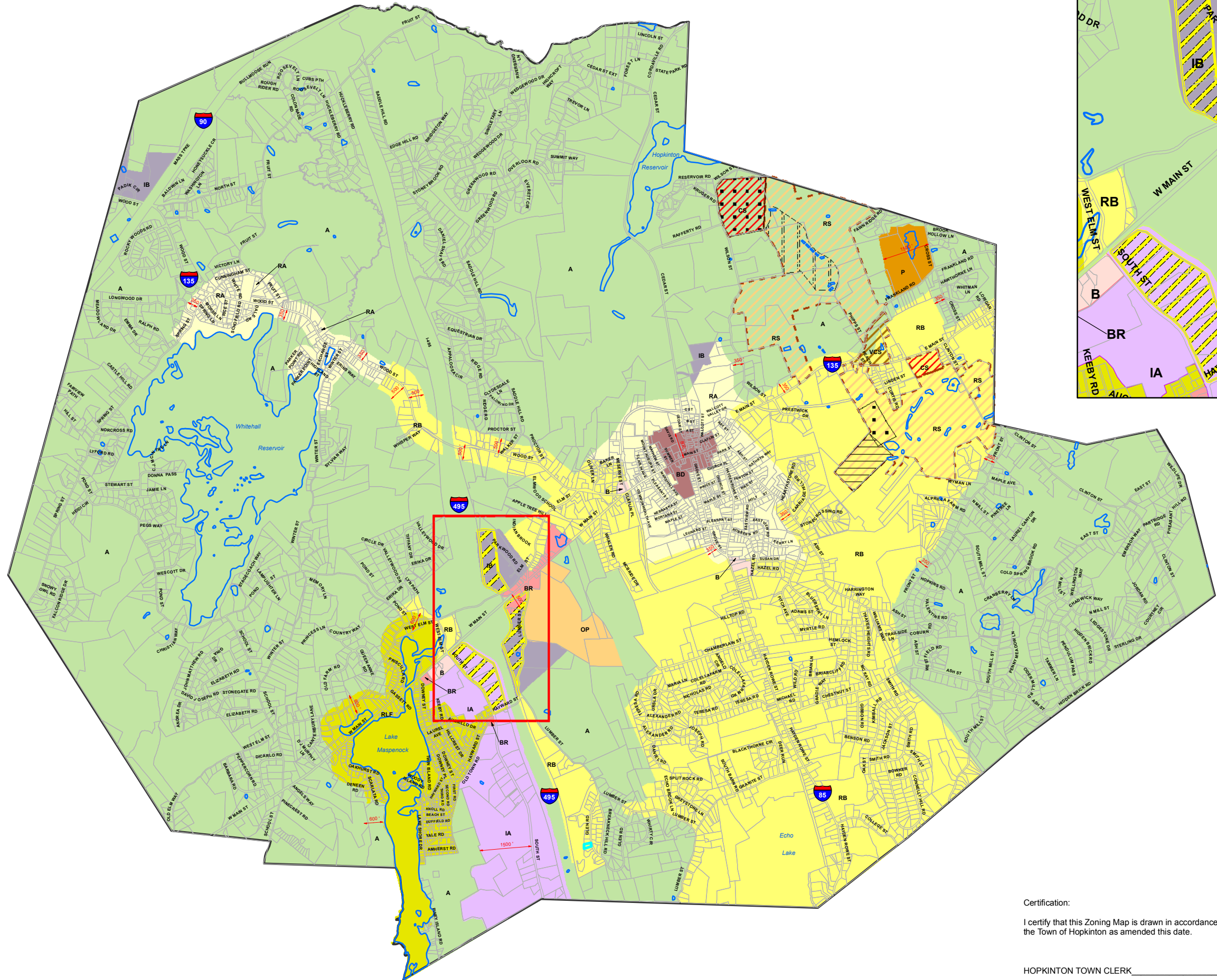
- RA Residential A
- RB Residential B
- RLF Residential Lake Front
- A Agriculture
- B Business
- BR Rural Business
- BD Downtown Business
- P Professional Office
- OP Office Park
- IA Industrial A
- IB Industrial B

0 0.25 0.5 1 Miles

Water Resources Protection Overlay District is shown on separate map

Source: Selected data provided by the Town of Hopkinton

Map produced by:



Certification:

I certify that this Zoning Map is drawn in accordance with the Zoning Bylaws of the Town of Hopkinton as amended this date.

HOPKINTON TOWN CLERK _____ DATE _____